



tifco industries

FABRIC STRUCTURES

Protect. Produce. Grow.

WE'VE GOT YOU COVERED



GET A FREE QUOTE!

www.tifco.com/shelters



tifco industries
THE RIGHT PART IN THE RIGHT PLACE AT THE RIGHT TIME



Enclosed Fabric Structures

- TEMPORARY CLASSROOMS
- GYMNASIUM OR SPORTING EVENTS
- COVID-19 SCREENING
- TRIAGE TENTS
- EMERGENCY MEDICAL FACILITIES
- PORTABLE CLINIC
- EMERGENCY RESPONSE
- DISASTER RELIEF



GET A FREE QUOTE!
www.tifco.com/shelters

PROFESSIONAL INSTALLATION IS AVAILABLE
CUSTOM SIZES AVAILABLE UPON REQUEST



tifco industries
THE RIGHT PART IN THE RIGHT PLACE AT THE RIGHT TIME



Drive-Through Fabric Structures

- COVID-19 SCREENING
- DRIVE-THRU TESTING
- BUS PARKING
- COVERED STORAGE
- WASTE MANAGEMENT & RECYCLING
- SALT AND SAND STORAGE



GET A FREE QUOTE!
www.tifco.com/shelters

PROFESSIONAL INSTALLATION IS AVAILABLE
CUSTOM SIZES AVAILABLE UPON REQUEST

THINGS TO CONSIDER

WHEN BUYING A FABRIC STRUCTURE

QUICK CHECKLIST & BUYING GUIDE

Why do you need a fabric structure?

We custom build your structure specific to your application so begin thinking about who or what will be working within it.

- Do you want to protect fixed machinery, moveable equipment or perhaps large vehicles, marine equipment or aircraft?
- Are you expanding your business and need more workspace?
- Or are you keeping materials out of the weather?

How big does it need to be?

We understand that your assets may need unique clearances for width and height. Starting at 12' and extending to 166' inch width, our structures can be built to a limitless length with our largest structure topping out at nearly 73' tall.

- Are there any unique size requirements that we should consider?

Where is it going?

Our structures can be installed on virtually any surface with minimal site preparation but will require anchors specific to your location.

- Will it be on asphalt, concrete, wood pilings or perhaps on a shipping container or on ballast blocks?
- Is your greatest need to protect against heat and sun or possibly cold and snow?
- Will it be near the coast or high winds?

Does it need to be enclosed and conditioned?

With natural light and relative temperature differences of nearly 15 degrees (cooler in the summer and warmer in the winter), our structures provide a surprisingly nice environment for both hot and cold climates even when not conditioned.

- Do you need the structure fully enclosed?
- Do you need it insulated, heated and cooled?

What will enter your new structure and how?

We have a variety of closed and access end panels available and doors of various sizes including glass, aluminum and rollup.

- What will be the easiest way for you and your equipment to enter and exit your structure?

Have you thought about custom options?

Portable flooring, custom air scrubbing systems, electrical and lighting packages are just a few of the many options available to round out an interior environment specific to your business.

- Do you have daily tasks or workflows we should consider when designing your complete structure package?

Do you need help with installation?

We offer a complete end-to-end solution from planning all the way through final installation and can do as much or as little as you require.

- Do you have the capability to install your own structure or want to leave it to us?
- How often will your structure change locations?



Smarter, faster, more reliable and increasingly more mobile. These are the demands of the modern business world and our structures are built to meet them.

For over three decades we have worked closely with manufacturers to perfect discreet product specifications, and in that time, we've mastered the details. More important than any single technical component, we use a flexible system comprised of our proprietary tensioned fabric and steel framework to build world-class structures that perform in any application, climate or geographic location. This system enables us to custom-fit our structures to your exact specifications, allowing you to produce, protect and grow.

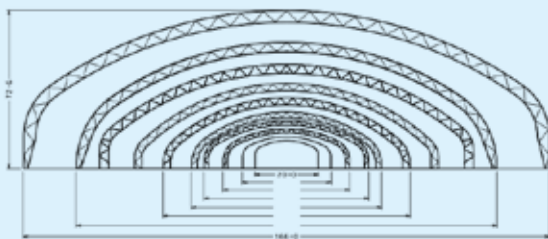
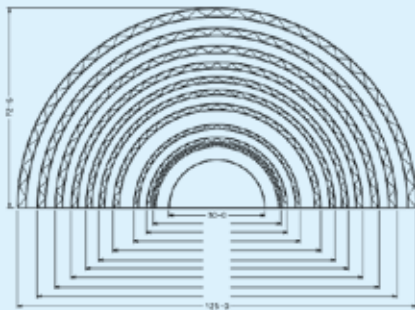
WE CAN CUSTOMIZE ACCESSORIES AND ADD-ONS TO FIT YOUR UNIQUE NEEDS - THE POSSIBILITIES ARE ENDLESS.

PROPRIETARY TENSIONED FABRIC AND STEEL SYSTEM

We use only the best available fabric to produce our durable and flexible structures. Our tensioning system works in conjunction with a unique galvanized steel framework. Long lasting, maintenance free and rust resistant, all frames are created as modular pieces by experienced in-house craftsmen to allow for quick assembly on location.

SIZES

One of the primary benefits of a fabric structure is the ability to tailor our structures to meet the height and width requirements of nearly any application.



WARRANTY

Providing long-lasting high-quality products means offering our customers a variety of different warranties that extend the life of our products. Our different warranties cover the fabric in our original structures, and in our used inventory, as well as the steel frames we use in our structures.

DOORS

Access points can make a big difference in a structure's ease of use, as well as maintaining energy efficient environments. Whether its glass, aluminum, or fabric, our door options provide customers with added insulation and enable large-scale entry.

Options include:

- Disappearing Vinyl (manual or electric)
- Metal Door (chain hoist or electric)
- Personnel (single and double in either aluminum or steel with optional panic hardware)
- Large Scale Hydraulic Powered Doors
- Clear Vinyl Freezer Flaps (can be used for refrigeration or equipment)
- Accordion fold vinyl flap with various winch options
 - Manual and Electric
 - Thern 472, 4HPF2M & 4WP2D8
 - DLB 1200
 - Superwinch 1500



HVAC

Proper heating, air conditioning and ventilation are critical to both a shelter's contents and the safety of its workers.

- Vent options: louvered vents, exhaust and intake fans
- Air remediation solutions
- Air scrubbing systems
- Dehumidification equipment
- Fans
- Wall mounted AC units
- Flex Duct
- Duct socks
- Radiant Tube - Gas & Electric
- Radiant - Electric
- Forced Air - Gas & Electric





ELECTRICAL

We work with customers to determine your additional lighting needs and provide you with design, manufacturing and delivery of all components, which include, among others, metal-halide lights, fluorescent lights, and flood lights.



LIGHTING

- 400 W Metal Halide
- LED lighting
- Fluorescent lighting
- Obstruction lighting
- Wall pack
- Exit with battery Back
- Flood Lights
- Exterior Lighting
- Exit
- Incandescent



ANCHORING

Whether it's dirt, asphalt, concrete, wood or even an ISO shipping container, our experts work closely with you to determine which anchoring method or mobility solution best fits your needs.

Options include:

- 40" spiral anchor
- Concrete anchor



MOBILITY

A mobile structure offers the ability to choose different sites, lessen environmental impact and cut costs on future projects. Our new structures can be built to be crane lift-able. We also offer a retro fit kit for structures 2012 and newer. Wheeled mobility options also available:

- 100 & 70 lb crane rail
- Manual and pneumatic jacks
- V-grooved wheels – (roll on inverted angle)
- Casters – (mounted to directly to structure)



LIGHTNING PROTECTION

We offer various of levels of protection to help meet your budget including:

- Preventor 2005A
- UL Rated Air Terminal System
- Standard Air Terminal System
- Grounding Kit



FLOORING

If you are not installing on a concrete slab or other fixed system we have options including:

- Hexadeck
- Event Deck
- Turf/carpet
- Sports flooring



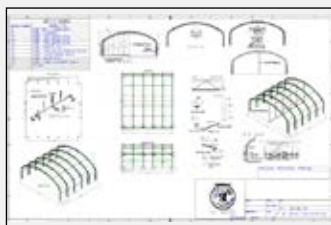
INSULATION

- Astro Foil
- Insulation Liners
- Batt Insulation - R30



ENGINEERING

Wind and Snow loading are important factors when it comes to your fabric structure. If required, can provide engineered stamped drawings for all 50 States and Internationally (IBC).



GUTTERS

- Fabric gutters for adjoining structures
- Aluminum terminations bars that prevents flapping in excessively windy areas for a more finished look.
- Prevents groundwater intrusion.



ASK THIS QUESTION **WHEN BUYING A FABRIC STRUCTURE**

Is the structure's fabric flame retardant, and does it meet the NFPA 701 Large Scale Sel-Extracting Test?

Welding, grinding or heavy machinery can pose a hazard to daily operations creating sparks or even electrical fires within your fabric structure. Fabric that meets or exceeds NFPA (National Fire Protection Association) 701 will help keep your structure and thus the valuable assets within protected by not engulfing in flames. The fabric will, in effect, stop burning in 2 seconds when the flame is removed and not spread. At Tifco, we believe in mitigating risk which allows you to focus on your business and not question if your personnel, machinery, or stored goods are safe under cover. All structures meet or exceed NFPA 701. We wouldn't have it any other way.



Enclosed Fabric Structures	Structure Estimated Price
50' Wide x 50' Long x 18' Tall w/2 Personnel Doors	\$34,600.00 + shipping
50' Wide x 100' Long x 18' Tall w/2 Personnel Doors	\$62,800.00 + shipping
Drive-Through Fabric Structures	Structure Estimated Price
20' Wide x 30' Long x 11' Tall Open-Ended	\$11,700.00 + shipping
20' Wide x 50' Long x 11' Tall Open-Ended	\$17,900.00 + shipping

GET A FREE QUOTE!
www.tifco.com/shelters

SEE THE DIFFERENCE

FABRIC SPECS / CHARACTERISTICS



Agriculture | Aviation | Commercial + Industrial | Environmental | Government | Marine | Military | Mining + Mineral
Oil + Gas | Schools + Gymnasiums | Sports + Events

PROTECT YOUR MOST VALUABLE ASSETS WITH THE TOUGHEST FABRIC IN THE INDUSTRY

Waterproof, windproof, treated to protect against UV and mildew and is lead free

Translucent - No artificial lighting needed for daytime use (opaque options available)

Provides a 10-15 degree temperature change (cooler in the summer and retains heat in the winter)

Unique polyester scrim that with a tighter weave that prevents tearing and makes our fabric 30-50% stronger

Flame retardant / Passes NFPA - 701 Large/Small Scale Self Extinguishing Test

Available in 18oz (21 mil), 22oz (22.5 mil) and 28oz (32 mil)

Berry compliant (100% American made)

Radio Frequency or Hot Air Welded for the strongest waterproof seams on the market



INSIDE (Shown Above)

Ripstop Inside to Mitigate Tearing

OUTSIDE

Smooth Outside to Deflect Dirt

**FEEL THE DIFFERENCE
FOR YOURSELF**

Contact Us for a Fabric Sample

GET A FREE QUOTE!
www.tifco.com/shelters

21400 Northwest Freeway, Cypress, Texas 77429

800-868-4326

shelters@tifco.com

AF#93531 • 11/09/2021